

# 2010 Marin County Data Summary:

## County of Marin Demographic Profile



### General Demographic Characteristics for Marin County

	2000 Census <sup>3</sup>	ACS 2006-2008	2010 Census	Percent change from 2000 to 2010
<b>Total Population</b>	247,289	246,985	252,409	2.1%
<b>Sex and Age Breakdown</b>				
Female	124,737	123,823	128,337	2.9%
Male	122,552	123,162	124,072	1.2%
under 5 years	13,396	13,550	13,932	4.0%
5- 9 years	14,338	12,858	15,481	8.0%
10-19 years	26,433	26,702	27,039	2.3%
20-24 years	9,633	13,094	10,308	7.0%
25-34 years	32,015	23,800	24,836	-22.4%
35-44 years	44,586	35,685	36,478	-18.2%
45-54 years	45,592	43,744	42,055	-7.8%
55-59 years	16,791	22,107	20,826	24.0%
60-64 years	11,215	17,180	19,262	71.8%
65-74 years	16,791	20,236	23,211	38.2%
75-84 years	12,060	12,798	12,425	3.0%
85 years and over	4,581	5,231	6,556	43.1%
<b>Race/ Ethnicity Breakdown</b>				
White	207,800	200,482	201,963	-2.8%
Black/African American	7,142	8,000	6,987	-2.2%
Amer. Ind./Alaskan Native	1,061	864	1,523	43.5%
Asian	11,203	13,942	13,761	22.8%
Pacific Islander	388	540	509	31.2%
Two or more races	8,579	6,153	10,693	24.6%
<b>Hispanic Ethnicity</b>	<b>27,351</b>	<b>33,569</b>	<b>39,069</b>	<b>42.8%</b>

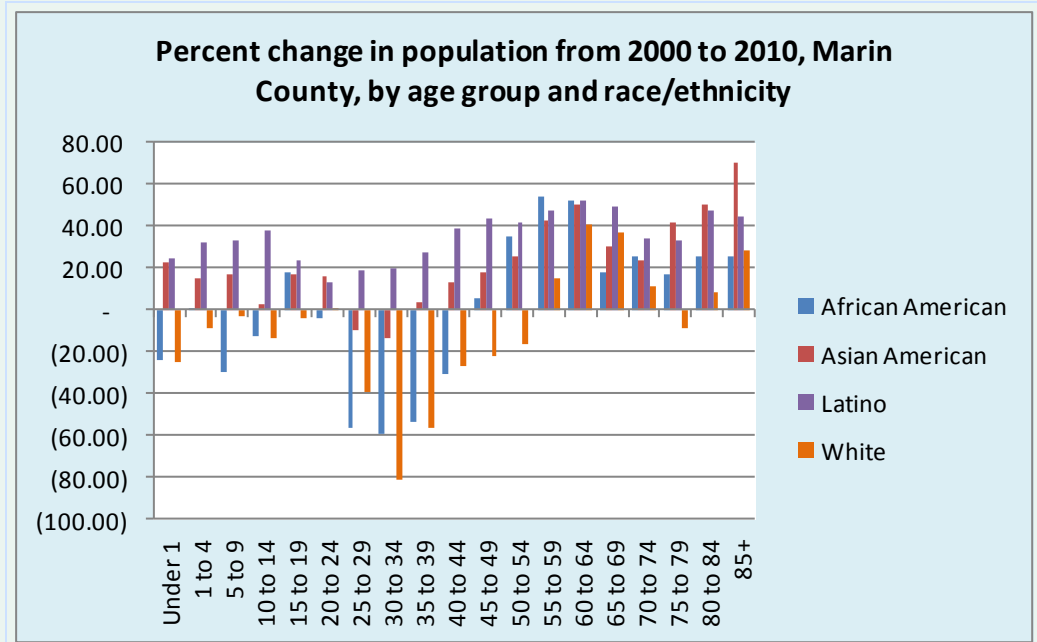
- Accurate counts of our population take place during census years, with the most recent taking place in 2010. During intercensal years, we use assessments made by the American Community Survey (ACS) and the California Department of Finance (DOF) to evaluate our population numbers.
- The population of Marin County has remained relatively stable. DOF projections show a slight increase of 2.1% for the year 2010 for the whole population, and greater changes for other age categories.
- Per the DOF projections, the ethnic/racial breakdown of the Marin population will also change somewhat. While the majority of the population will continue to be White, the proportion of the population of Hispanic/Latino ethnicity will increase.

# 2010 Marin County Data Summary: County of Marin Demographic Profile

## Current Population

### Percent Change in Population by Race from 2000 to 2010

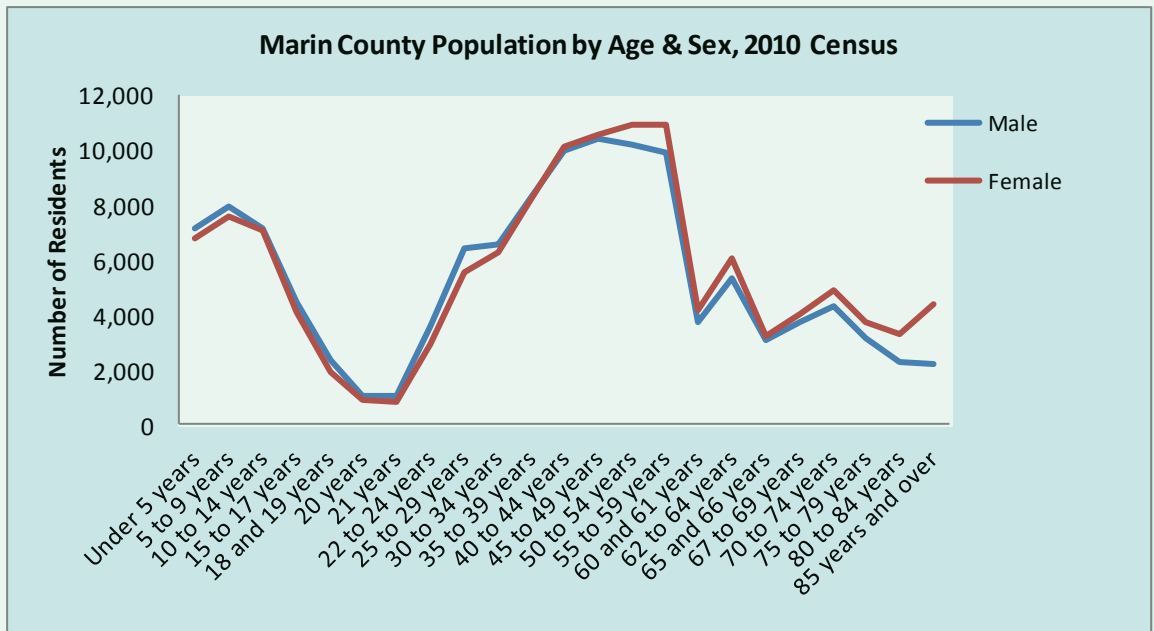
While the overall change in the population from 2000 to 2010 was small (2.1%), the County experienced changes in certain age/race categories. For example, there were large decreases in the population of Whites and African Americans in the 25-49 year age groups, but increases in the older population in these racial groups. There were substantial increases in Asians and Latinos in most age groups.



### Current Age and Sex Breakdown

Nearly one third of adults in Marin county are over age 55 years. Children and youth (ages 0-19) comprise an estimated 22% of the population in Marin County compared to 28% in California.

The number of males and females in the population are similar except in the older ages where there are slightly higher numbers of females.<sup>1</sup>



# 2010 Marin County Data Summary: County of Marin Demographic Profile

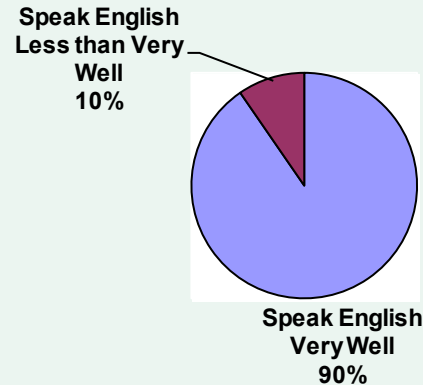
## Current Population

### Language Spoken at Home

English Only	76.6%
Spanish	12.8%
Other Indo-European	7.0%
Asian & Pacific Island	3.3%
Other	0.4%

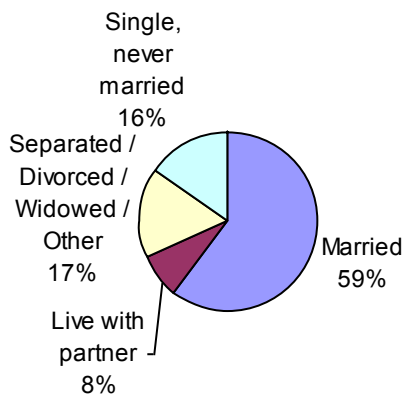
Among those who speak another language, 53.2% of Spanish speakers, 19.8% of Other Indo-European speakers, 42.1% of Asian language speakers, and 17.0% of Other language speakers report speaking English "less than Very Well".<sup>6</sup>

### English Language Proficiency



### Marital Status

Approximately 2/3 of adults in Marin county are either married or live with partner.<sup>2</sup>



### Education

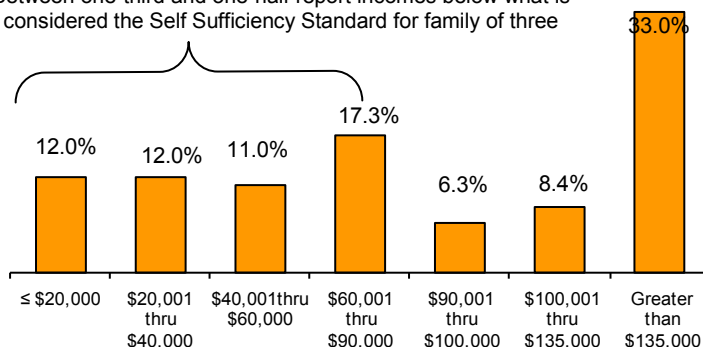
Approximately 90% of adults reported completing a high school education, with 55% of those completing either a four-year college degree or higher.<sup>2</sup>

### Highest Education Level Completed

Less than High School graduate	11.3%
High School graduate	15.9%
Some college/Trade school	17.9%
Four year College Grad	29.6%
Post grad/professional degree	25.4%

### Income and Poverty

Between one-third and one-half report incomes below what is considered the Self Sufficiency Standard for family of three



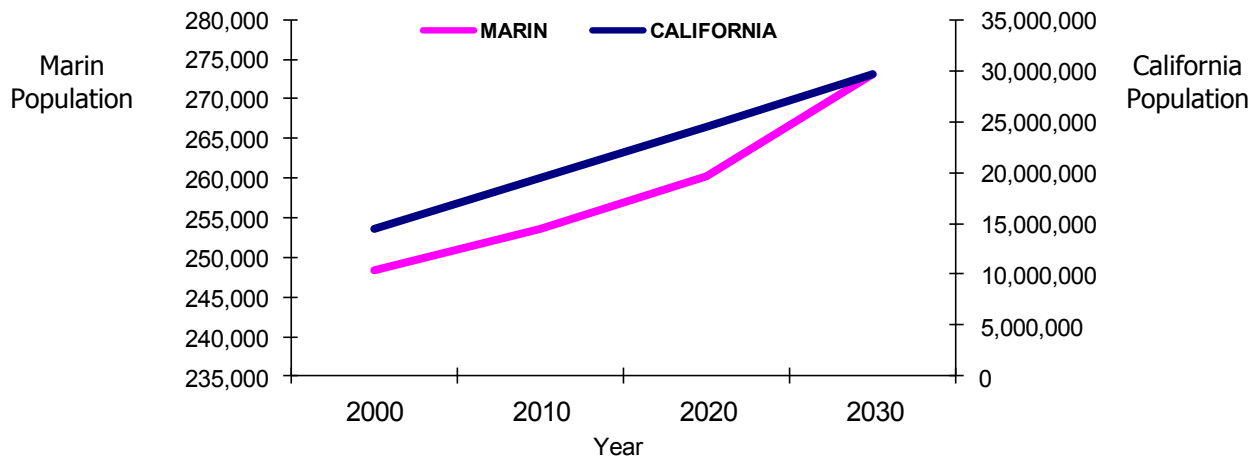
One third of adults reported household incomes greater than \$135,000 in 2009. 9.1 percent of the Marin Population report living in poverty per Federal Poverty Level (FPL) guidelines in 2010<sup>5</sup>. For a family of 3 (the average household size in Marin), the FPL is \$18,310. When the Self-Sufficiency Standard, which calculates the income needed by working families to meet basic needs, is considered, an annual income of \$82,913 would be necessary to meet the most basic expenses for a family of three in Marin County.<sup>4</sup>

# 2010 Marin County Data Summary: County of Marin Demographic Profile

## Population Projections

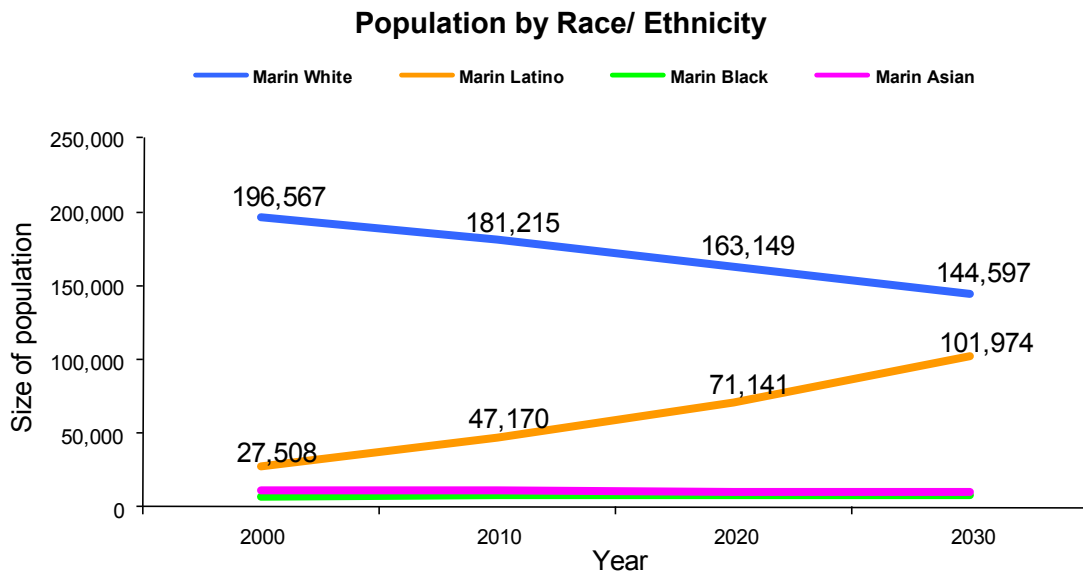
### Population of Marin compared to California

Per DOF projections, the Marin County population will increase slightly over the next twenty years. By 2030, the population will have increased 10% from 2000 census calculations. This differs significantly from California projections where a 44% increase in the statewide population is expected in the same time period.<sup>1</sup>



### Race/Ethnicity Breakdown

Historically, Marin County has been less diverse than the rest of California; however, that trend is changing. Nearly 3/4 of the Marin County population is White. Latinos are the next largest group at 19%. By 2030, it is projected that Latinos will comprise 38% of the Marin County population, a 100% increase. The proportion of Asian and Black Marin County residents will remain relatively stable.<sup>1</sup>

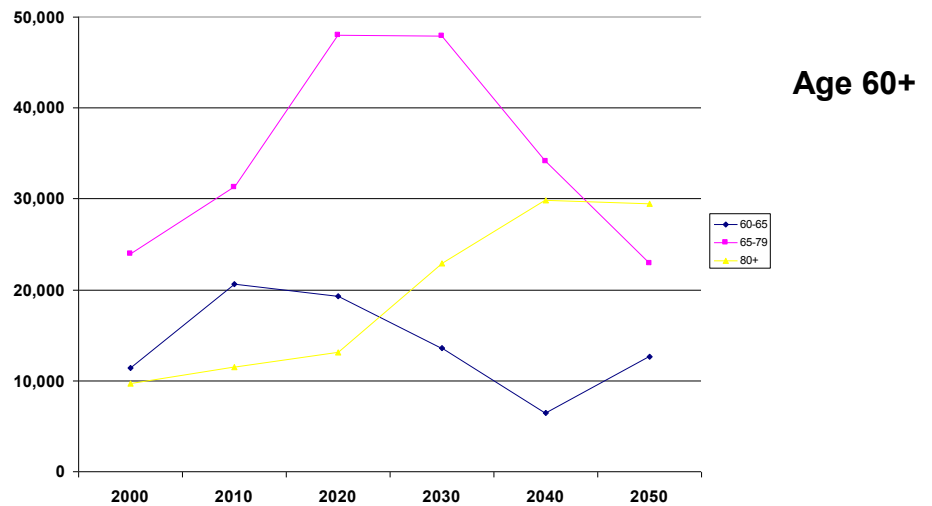
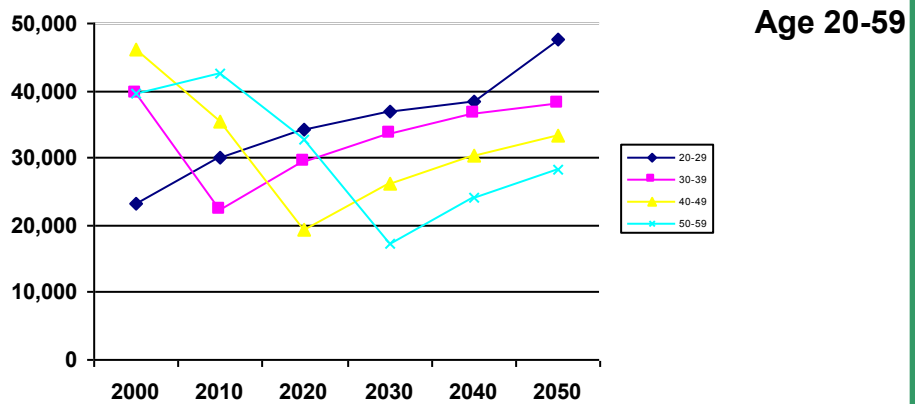
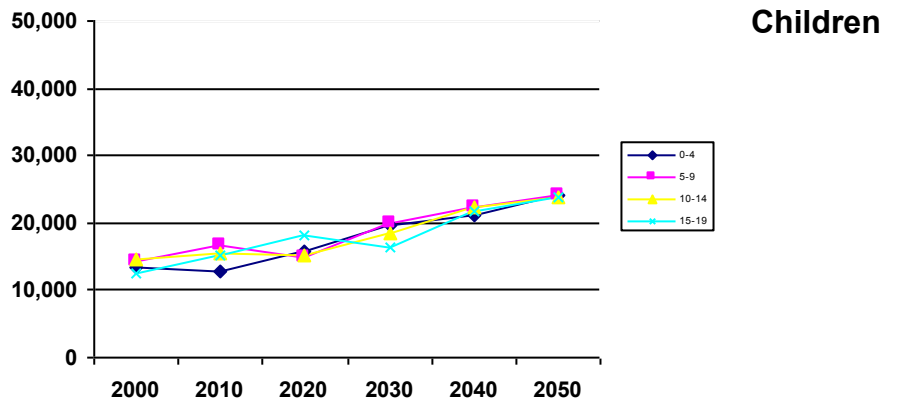


# 2010 Marin County Data Summary: County of Marin Demographic Profile

## Population Projections

### Age Breakdown

Between 2010 and 2030, the county is projected to undergo changes in the age breakdown of the population. The population is projected to become more top and bottom heavy suggesting a greater aging population and greater youth population, with a smaller middle age population. Population increases are projected to occur in all age groups of children. Seniors aged 65-79 will increase through 2030, while the "oldest seniors" (80+) will increase in numbers beginning in 2020. These changes will have implications for the need for services to support the county's youth and senior populations.



### Sources:

1. State of California, Department of Finance, *Race/Ethnic Population with Age and Sex Detail, 2000-2050*. Sacramento, CA, July 2007
2. California Health Interview Survey CHIS 2009 Adult Public Use File. *UCLA Center for Health Policy Research* 2009. Los Angeles CA.
3. U.S. Census Bureau, 2006-2008 American Community Survey
4. Insight Center for Community Economic Development, 2011. <http://www.insightccd.org/uploads/cfes/2011/Marin.pdf> accessed 10/12/11.
5. 2010 HHS Federal Poverty Guidelines. <http://aspe.hhs.gov/poverty/figures-fed-reg.shtml> Accessed 10/10/11.
6. U.S. Census Bureau, 2008-2010 American Community Survey